

①
P. code 37072

Q.1cb) SRC document
P.p. 10/10/10

IEEE Standard SRS Template

1. Introduction

- 1.1. Purpose
- 1.2. Scope
- 1.3. Definitions, acronyms & abbreviations
- 1.4. References
- 1.5. Overview

2. Overall description

- 2.1. Product perspective
 - 2.1.1. System interfaces
 - 2.1.2. User interfaces
 - 2.1.3. Hardware interfaces
 - 2.1.4. Software interfaces
 - 2.1.5. Communications interfaces
 - 2.1.6. Memory constraints
 - 2.1.7. Operations
 - 2.1.8. Site adaptation requirements
- 2.2. Product functions
- 2.3. User characteristics
- 2.4. Constraints
- 2.5. Assumptions and dependencies
- 2.6. Apportioning of requirements

3. Specific Requirements

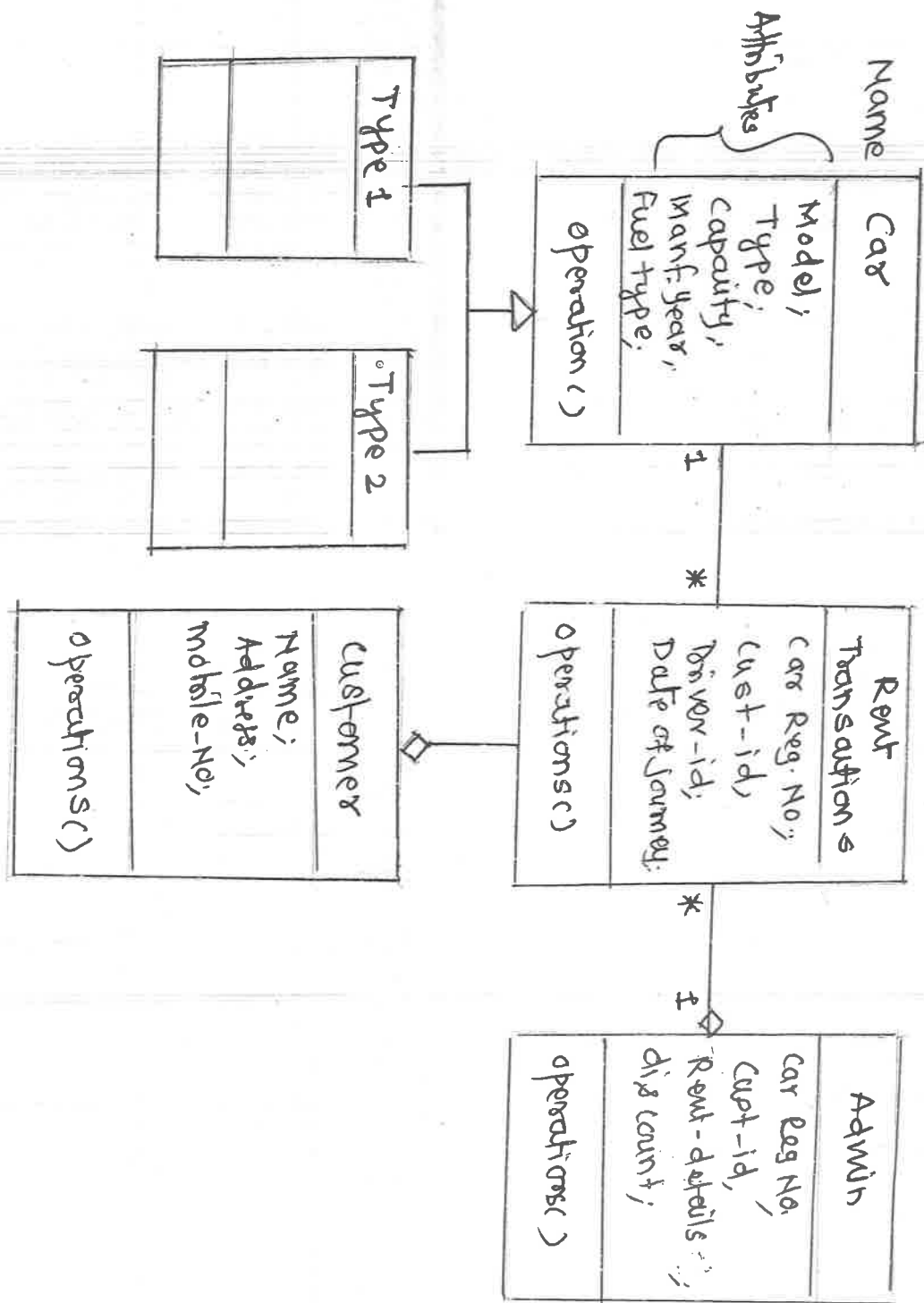
- 3.1 External interface requirements
 - 3.1.1 User interfaces
 - 3.1.2 Hardware interfaces
 - 3.1.3 Software interfaces
 - 3.1.4 Communication interfaces
- 3.2 Specific requirements
 - 3.2.1 Sequence diagrams
 - 3.2.2 Classes for classification of specific requirements
- 3.3 Performance requirements
- 3.4 Design constraints
- 3.5 Software system attributes
 - 3.5.1 Reliability
 - 3.5.2 Availability
 - 3.5.3 Security
 - 3.5.4 Maintainability
- 3.6 Other requirements

4. Supporting information

- 4.1 Table of contents and index
- 4.2 Appendixes

Q2 (b) class diagram for car rental management system

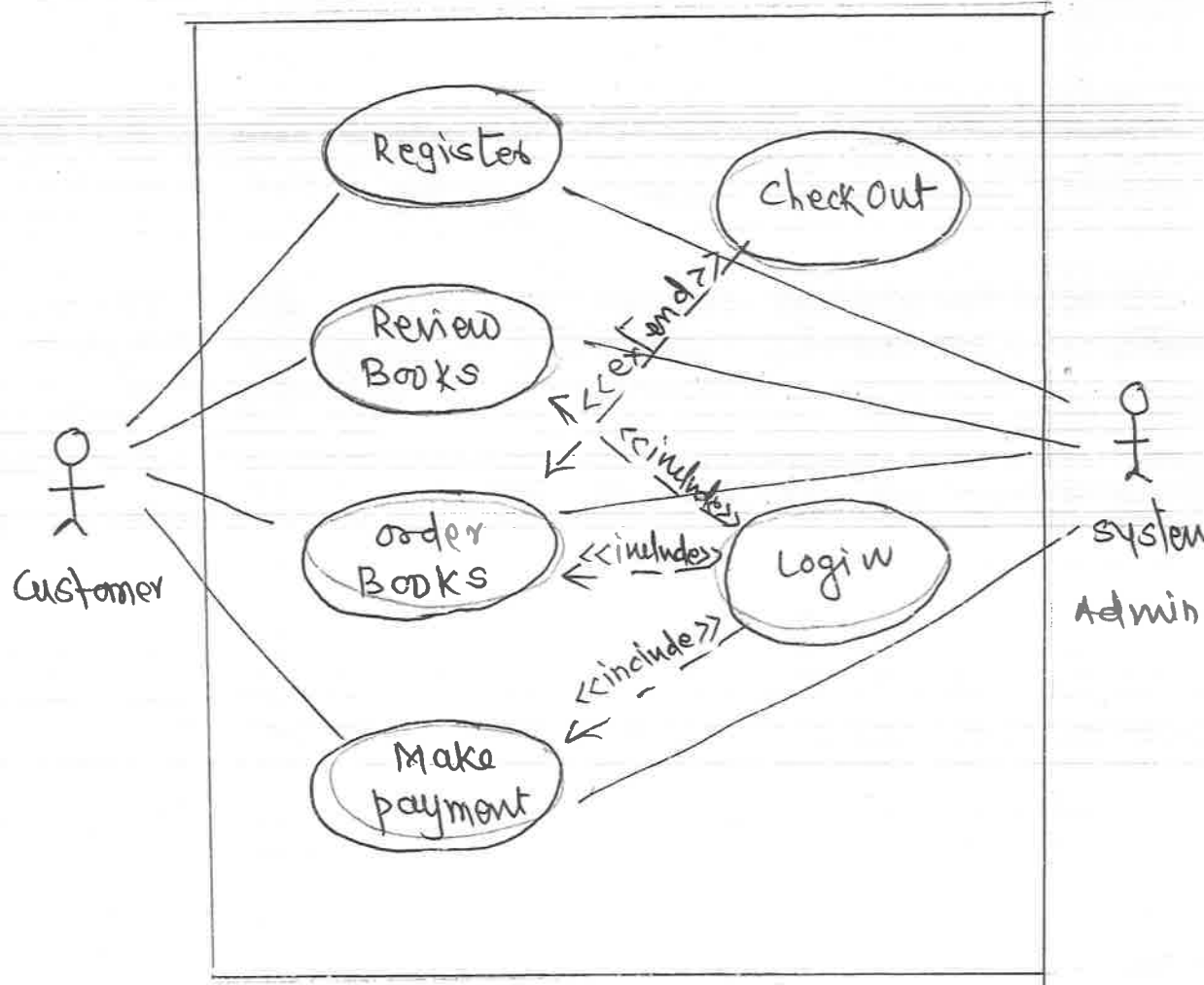
02



Q.4(a) use case diagram for online book shopping

1.1

03



04
 Q. 5 (b) Sequence diagram for ticket vending machine

