

PDP

PANDIT DEENDAYAL PETROLEUM UNIVERSITY

Recognised by UGC • ISO 9001:2008

SPM

SCHOOL OF
PETROLEUM
MANAGEMENT

INDIA'S
LEADING
B-SCHOOL
CELEBRATES
10 YEARS
(2006-16)

MBA

ADMISSIONS 2017

ENERGY &
INFRASTRUCTURE

GENERAL
MANAGEMENT

Admissions
based on

CAT 2016/ XAT 2017 SCORE

for short-listing the
candidates, followed
by performance in
WAT, GD & PI, work
experience and
academic record for
selection.

2 YEAR
FULL-TIME
RESIDENTIAL
PROGRAMME

Select
Placements
(2014 - 2016
Batch Highlights)

TOP RECRUITERS (2014-16 BATCH)

Accenture

Bennett Coleman & Co. Ltd.

CARE Ratings

CRISIL

Dholera International Airport Ltd.

Empire Industrial Equipment

Ernst & Young

Flourish Foods

GAIL

Gujarat Gas Limited

ICICI Bank

ICICI Prudential

ICICI Securities

Infosys

L&T Infotech

Protiviti

RE Connect

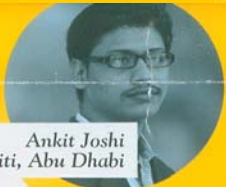
Sabarmati Gas Limited

TCS

TOTAL Oil

Wipro

and counting...



Ankit Joshi
Protiviti, Abu Dhabi



Mohit Jaiswal
CARE Ratings



Kunal Sugandhi
GAIL



Mehernaaz Pathan
CRISIL



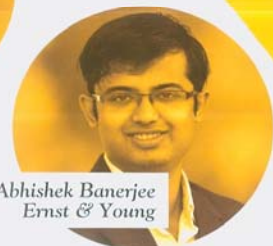
Jai Oza
TOTAL



Parth Parekh
Infosys



Deepak Mishra
ICICI



Abhishek Banerjee
Ernst & Young



Shikha Sah
Accenture



Pranjal Kishore
Wipro

PDPU Ranked
55th
in India by
NIRF, MHRD,
Govt. of India

Ranked among Top 40 B-Schools
(CSR-GHRDC B-School Survey 2016)

PDPU Campus, Raisan,
Gandhinagar - 382 007, Gujarat, India.

Phone: **079-23275109/19 | 9727703101**

For more information visit:
www.spm.pdpu.ac.in

IIMs/ XLRI have no role either
in the selection process
or in the conduct of the
programme.